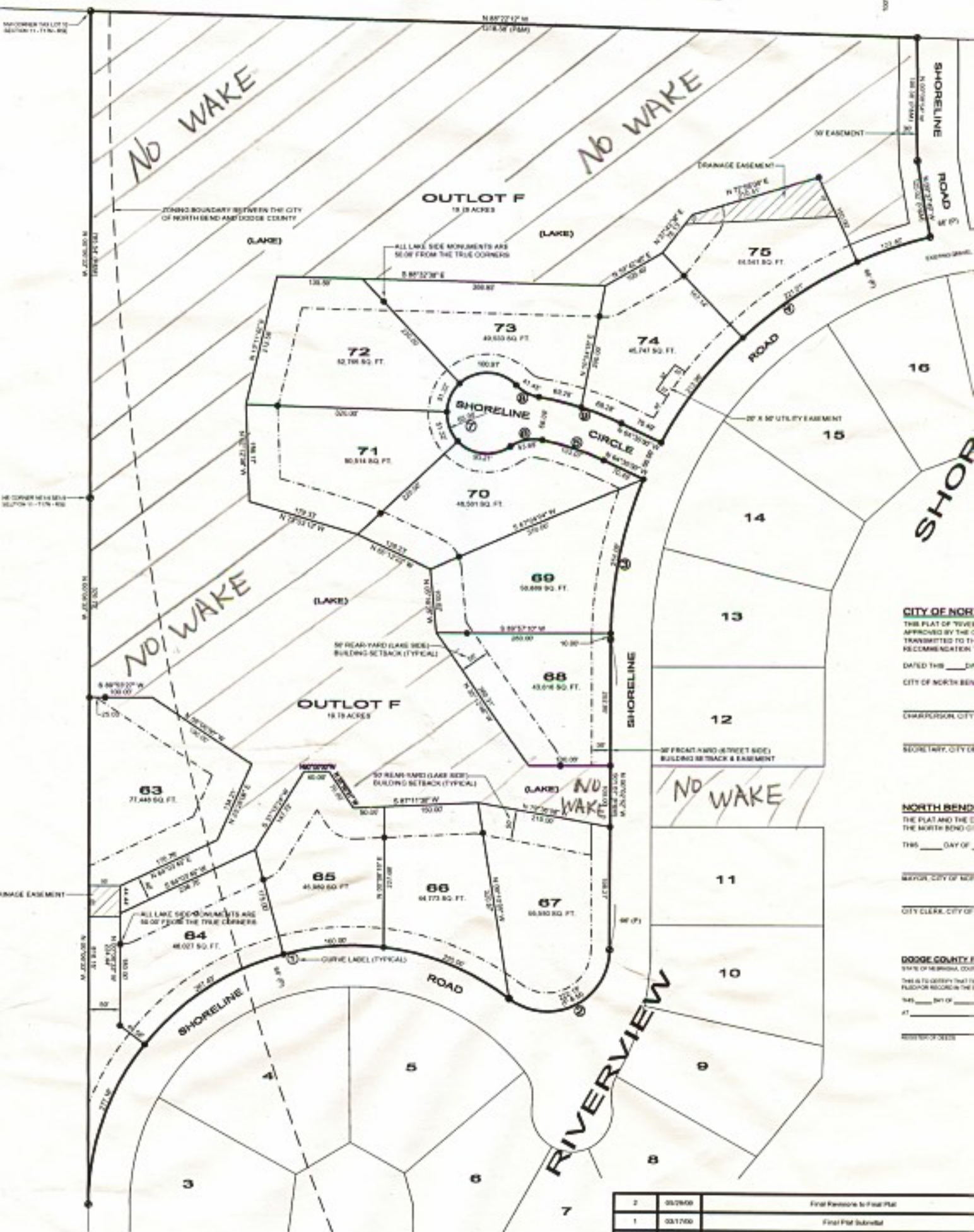


# RIVERVIEW SHORE

A REPLAT OF OUTLOT B, OF RIVERVIEW SHORE  
SECTIONS 11 & 12, TOWNSHIP 17 NORTH, RANGE 5 EAST

UNION PACIFIC RAILROAD



CITY OF NORTH BEND  
 APPROVED BY THE CITY CLERK  
 TRANSMITTED TO THE REGISTER  
 RECOMMENDATION  
 DATED THIS \_\_\_\_\_ DAY OF \_\_\_\_\_  
 CITY OF NORTH BEND  
 CLERK/CORPORATE CITY  
 SECRETARY, CITY OF  
 NORTH BEND  
 THE PLAT AND THE CITY OF  
 THE NORTH BEND OF  
 THIS \_\_\_\_\_ DAY OF \_\_\_\_\_  
 MAYOR, CITY OF NORTH BEND  
 CITY CLERK, CITY OF  
 DODGE COUNTY, IOWA  
 STATE OF IOWA, COUNTY OF  
 THIS IS TO CERTIFY THAT THIS  
 PLAT FOR RECORD IN THE  
 1945 \_\_\_\_\_ DAY OF \_\_\_\_\_  
 AT \_\_\_\_\_

|   |          |            |
|---|----------|------------|
| 2 | 03/29/00 | Final Plat |
| 1 | 03/17/00 | Final Plat |